

City of Prairie du Chien

PARKS | RECREATION | FORESTRY



Activity Guide
Fall & Winter 2019-2020

Hi everyone! My name is Ryan Schmidt and I am the new Recreation and Aquatics Manager for the Prairie du Chien Parks, Recreation, and Forestry Department. I am originally from Viroqua, WI and recently graduated from the University of Wisconsin-La Crosse with my Master's Degree in Recreation Management. I am excited to be working for the City of Prairie du Chien and am especially looking forward to getting to know members of the community. If you have any questions feel free to come visit me at Hoffman Hall this Fall and Winter!

Ryan Schmidt

We welcome Ryan to our community and hope you take the opportunity to visit with him and check out the many program offerings at Hoffman hall as well as at all of our parks this fall and winter. We have many great fun and leisure "things" available for you this and we look forward to providing them to you to as a means to relax, unwind , and enjoy your life here in Prairie du Chien!

Go Packers!

Mike Ulrich - Parks & Recreation Director



PARK SHELTERS

PARK SHELTER RESERVATIONS ARE AVAILABLE BETWEEN MAY 2 AND OCTOBER 31.

- Fort Fun Shelter E. Wells St. by swimming pool
- O'Brien Park Shelter..... 12th & Fowler Streets
- Lochner Park Shelters..... Large open shelter & smaller closed shelter at S.Wacouta & Wells
- Lawler Park So. & No. Shelter Water Street
- Fourth Ward Shelter Fisher St. & Villa Louis Rd.
- St. Feriole Island Jaycee Shelter Bolvin & 5th Streets
St. Feriole Island
- Lawler Interpretive Shelter End of E. Blackhawk St.
- St. Feriole Island Gardens Gazebo... Rolette & 4th Streets
- Washington St. Park Shelter..... N. Main Street by the Marina
- LaRiviere Farm Park Barn Vineyard Coulee Rd.
- LaRiviere Park Shelter..... (Note: \$50 Res/\$60 Non Res)
- Leamy Shelter..... In Sculpture Park on 4th
& Bolvin
- Lessard Shelter Blackhawk & Villa St.

RESERVATION PROCEDURES:

Contact City Hall office (326-6406) to reserve a shelter. Residents pay a \$25 reservation fee, non-residents pay \$35. This fee is per shelter per day and must be paid one week after making reservations.

JOB OPPORTUNITIES

Applications are accepted year-round for a variety of part-time positions, including score keepers, instructors, lifeguards and officials.

If you have talents that you're willing to share and would like some extra income, contact the Park & Rec Department at 326-7207.



THE CITY OF PDC MAY UTILIZE PICTURES OF INDIVIDUALS IN PROGRAMS FOR ADVERTISING PURPOSES.



BOARD OF PARK COMMISSIONERS



(L-R) Beth Wagner, Angie Kramer, Ruth Check-Gates, Mike McCoy, and Tom Nelson (Chair).

LA RIVIERE PARK BOARD MEMBERS



(L-R) Ivan Hofflard, Dee Baker, Dave Shihata (chair), Dave Troester, and Mike Mara.

HOW TO REGISTER

OPTION #1: Online Registration for Fall/Winter Recreation programs. Go to <http://pdc.recdesk.com/community/program> to sign up for easy registration!



OPTION #2: Mail or Drop off your complete registration form/ fees to City of Prairie du Chien Park & Recreation Dept., 214 East Blackhawk Ave., P.O. Box 324, Prairie du Chien, WI 53821. For your convenience, an after hours drop box is located at Hoffman Hall West Parking Lot. To aid in programming, we request that you register early. Late sign-up may mean program cancellation.



YOUTH | SPORTS | LEISURE | FUN

YOUTH FOOTBALL

Co-sponsored by Prairie Pulverizing, Inc. This is offered for youth grades 1st-4th with emphasis on learning skills, playing different positions, & most importantly having fun! **Parent/child Info. meeting:**



1st & 2nd Gr: Sept. 4 - 4:30pm
3rd & 4th Gr: Sept. 4th - 5:30pm

Instructional League-1st & 2nd Gr: Sept. 9th - 4:30 - 5:15 pm

Jr. Varsity League-3rd & 4th Gr: Sept. 9th - 5:30-6:30pm

PRACTICE SITE: Monday & Wednesday at Lochner Park

GAMES: Lochner Park on Saturday mornings

Sept. 28th, Oct. 5th, 12th, 26th.

FEES: Res. \$20, Non-Res. \$30 to City Hall by Aug. 29th or online: www.pdcrcdesk.com/recdeskportal

LITTLE NETTER VOLLEYBALL



Sponsored by Dependable Solutions. Comprehensive program open to boys & girls grades 2nd-6th, introducing basic skills & modified game play of volleyball with emphasis on participation & fun!

PRACTICE DAYS/TIMES: Saturdays - 8:30am-10am, Sept. 14th, 21st, 28th, Oct. 5th, 12th, 26th. **SITE:** Hoffman Hall

FEE: PDC Res. \$20, Non Res. \$30. **Register** by Sept. 6th to City Hall or online: www.pdcrcdesk.com/recdeskportal.

BASKETBALL - TAKE IT TO THE HOOP

This comprehensive program emphasizes basic fundamentals, participation, sportsmanship and FUN! Open to grades 1-4.



BEGINS: Week of Nov 11-Dec 28

3rd & 4th Gr. Boys & Girls: Mon. & Thurs. Meets between 5:30-7:30pm

1st & 2nd Gr. Boys & Girls: Wed. 5-6pm **Sponsored by:**



Saturday A.M. games at Hoffman Hall beginning Nov. 30th.

FEE: PDC Res. \$20; Non-Res. \$30

KNIGHTS OF THE SQUARE TABLE CHESS CLUB



Learn to play chess in friendly matches against peers in a low-stress, fun environment! Open to youth of all ages. Participants will be matched against opponents of similar skill. Class time will be split between lesson and game play with drinks and snacks provided.

Meets: Mondays 6-7pm, January 13-March 2 at Hoffman Hall

FEE: Res. \$10, Non-Res. Fee: \$20.

YOUTH SWIMMING LESSONS



DATES & TIMES TO BE ANNOUNCED AT HOFFMAN HALL POOL

INDOOR SOCCER

PLAY GAMES | HAVE FUN!



MEETS: All games on Saturdays beginning Jan. 11th - March 7th (will not meet Feb 22)

4 yr. olds 8-9am;
Kindergarten 9-10am;
1st & 2nd Graders 10-11am

SITE: Hoffman Hall

FEE: Res. \$20, Non-Res. \$30

HOLIDAY FUN NIGHT

FREE! Start the Holiday out with family & friends! The night includes making decorations and cookies, sipping hot chocolate and a visit from a very large man wearing red!

MEETS: Dec. 11th @ 6pm

SITE: Hoffman Hall Lobby

REGISTER: JUST SHOW UP AND HAVE FUN!



FAMILY SPORTS SAMPLER

Learn a variety of sports and have fun with friends & family!

MEETS: Thursdays March 5th-26th

TIMES: 5-6pm Kindergarten-2nd gr;

6-7pm 3rd gr. and up (with mom and/or dad for all sessions.)

SITE: Hoffman Hall Lobby

FAMILY FEE: Res. \$10; Non-Res. \$20



HOFFMAN HALL | RECREATION CENTER

AQUATICS, FITNESS, LEISURE & FUN!

1600 S. Wacouta Ave., Prairie du Chien, WI
608-326-2985 • www.prairieduchien.info

SERVING THE COMMUNITY AND THE SURROUNDING AREAS HEALTH, FITNESS AND RECREATION NEEDS FOR MORE THAN 50 YEARS!

POOL SCHEDULE

OPEN SWIM M-F 9:15am-11:30am
Sat & Sun... Oct 5 1-3pm (1-5pm starting Nov 2nd)

LAP SWIM M-F 7:30am-8:30am
M-F 11:30am-1pm
M-TH 4:30pm-6:30pm
Sat & Sun... 12-1pm starting Oct. 5th
(One lap lane will always be available)

POOL PARTY RENTAL Fri 4:30pm-6:30pm

WATER AEROBICS M-TH 8:30am-9:15am
DEEP WATER M,T 4:45pm-5:45pm
T,TH 5:30pm-6:30pm

DEEP WATER AEROBICS CLASS W 5:30pm-6:30pm

HOME SCHOOL SWIM CLASS TH 1pm-2pm



POOL & GYMNASIUM RENTAL

Accommodations can be made for business meetings, birthday parties, family reunions, receptions, sporting events, club activities and overnight stays. The historic facility includes: Lobby/Meeting room, large gym, fitness room, rec room, and heated Olympic size pool.

Call: 326-7207 for more information.

CORPORATE MEMBERSHIPS

Hoffman Hall is now offering corporate memberships for Businesses or Institutions within the City of Prairie du Chien that have 10 or more employees. Employees will need to show proof of their employment at the time of registering at Hoffman Hall's front desk.

DISCOUNTED FEES: \$40/monthly or \$325/annual (This is good for you and your children in one immediate family, one household only.)

FITNESS CLASS SCHEDULE

Monday 9:30am-10:30am **Tai Chi** (introduction)
4:30pm-5:30pm **Pilates** (through Sept.)

Tuesday 5:30am-6:30am **Step Aerobics**
4:00pm-4:45pm **Hatha Yoga**
5:00pm-6:00pm **Yin Yoga**

Wednesday 5:30pm-6:30pm **Zumba** (Begins Oct. 2)

Thursday 5:30am-6:30 am **Body Sculpting**
5:15-6pm **Pilates**
6:15-6:45 **Butts & Guts** (Begins Sept. 12)

Friday 9:30am-10:15am **Tai Chi** (Yang Short Form)

PILATES: Improves flexibility, builds strength and develops endurance & cardio.

TAI CHI: Emphasis on deep breathing and mental focus. Creates balance, flexibility & calmness which relieves stress.

BODY SCULPTING: Tighten & firm using weights, bands, balls & more.

HATHA YOGA: Increase your strength, flexibility & balance.

YIN YOGA: Gentle form of Yoga for joints and increasing your range of motion.

STEP AEROBICS: Listen to great tunes while toning & elevating your heart rate.

ZUMBA: Combined dance & aerobic exercise=FUN!



NEW BUTTS & GUTS: Challenge your core and increase your balance in an upbeat short workout to fit your busy schedule.

PRICES

	MONTHLY PASS	NON-RES MONTHLY PASS	ANNUAL MEMBERSHIP	NON-RES ANNUAL MEMBERSHIP
Family*	\$60.00	\$80.00	\$420.00	\$520.00
Adult (Ages 19-62)	\$50.00	\$65.00	\$375.00	\$450.00
Senior**/Youth/Student	\$40.00	\$50.00	\$325.00	\$375.00
Corporate (10 or more)	\$40.00		\$325.00	

DAILY PASS

Family.....	Resident	\$10.00.....	Non-Resident	\$12.00
Adults.....	Resident	\$5.00.....	Non-Resident	\$6.00
Senior/Youth/Student.....	Resident	\$3.00.....	Non-Resident	\$4.00

WALKING PASS.....Daily\$2.00 Monthly\$20.00

PUNCH PASSES

Adult	Resident	\$50.00.....	Non-Resident	\$60.00
Senior/Youth/Student.....	Resident	\$30.00.....	Non-Resident	\$40.00

Punch Pass Sale - \$10 OFF Price! Limit 2! (Sept. 27, Dec. 2-6)

*Family includes yourself, a spouse and your children in one immediate family, one household only. Children 18 and older cannot be considered for a Family Membership unless they are in college and can show a current registration receipt/ID.

**Seniors are considered age 63 and over.

***Full-time college student (12 credits undergrad/6credits grad) will be required to show a recent report card or registration receipt/ID.

Memberships include unlimited city-sponsored water and land fitness classes, lap swim, open swim, open gym, walking and golf. Annual membership will also include 1/2 off outdoor membership pool pass for June-August.

HOFFMAN HALL | RECREATION CENTER

SPORTS & LEISURE

All team managers must pay team fees and pickup rules at City Hall by deadline or online at <http://pdcrecdesk.com/community/program>. Team rosters are due prior to first scheduled game. All programs held at Hoffman Hall, call 326-2985 for more info!

ADULT CO-REC VOLLEYBALL LEAGUE



3 Men/3 Women
BEGINS: November 12th on Tuesdays starting at 6:30pm.
FEE: \$85/team
DEADLINE TO REGISTER: October 25th

ADULT BASKETBALL LEAGUE

BEGINS: Sundays Beginning November 24th, 8am - 2pm
FEE: \$270/team, **DEADLINE TO REGISTER:** October 25th



OPEN GYMS

Looking for ways to increase physical activity and have some fun? Typically, open gym is unstructured activity time where the gymnasium is available to students, families, and/or community member to play pick-up sports such as basketball or volleyball, participate in fitness stations, or run/walk laps to name a few.

DAYS/TIMES: Generally Monday-Fridays 8am-7pm, Saturdays & Sunday 12-3pm (Beginning in November 12-5pm) Please note Special Event and City programs may be scheduled during these times so please call ahead at 326-2985 or go to pdcrecdesk.com/community/program

FEES: See pricing on page 4 however all school days off cost is \$1.00!

CULVER'S WALKING & LAP SWIM FITNESS PROGRAM

Stay in shape and get rewarded with nutritious Culver's meals!

MEETS: Mon-Fri from 8-10am and during Lap Swim times at Hoffman Hall.



LIFEGUARD TRAINING CLASS

DATES AND TIMES TO BE ANNOUNCED

POT LUCKS

All Potlucks Begin 12 Noon Sharp

October 25th
Halloween Costume Contest

December 13th
Holiday Potluck

February 14th
Valentine's Day Potluck

May 29th
End of Year Potluck



Special themes, live music, and activities. Open to community and free.

Just bring a dish to pass. All beverages provided.

For more information call: 326-2985

BINGO

Every Wednesday from 1-3pm. Begins September 11th.

Offering a fun & friendly bingo experience for all ages. Come in, take a seat, drink some coffee, have some popcorn, make some friends, play some games and have a good time. Supplies are available and our volunteers are eager to help you learn the ropes. Cash prizes, hard cards, paper specials.
For more information, call 608-326-2985



BAKE SALE FOR ALZHEIMER'S & DEMENTIA ALLIANCE

Thursday, September 26th. 8:00am-2:00pm

All proceeds go to the local Alzheimer's Alliance.

(Bring your special treat to Hoffman Hall Recreation Center, 1600 S. Wacouta, on Wednesday, September 25th from 8:00am to 5:00pm Let us know what it is and we will bag it and price it! Most items will be \$1.00)

PALS: PHYSICAL ACTIVITY FOR LIFELONG SUCCESS

Class starting in March of 2020.

PALS is an evidenced base program specifically designed for older adults (60+) who are active less than 60 minutes per week to help them become and stay physically active. Please contact the ADRC of Eagle Country Prairie du Chien Office at 608-326-0235 for more information.

MEMORY CAFE AND SUPPORT GROUP AT HOFFMAN HALL

Memory Café:

3rd Tuesday each month Begins September 17th 10:00am-11:30am Memory Cafes are free, drop-in programs that enable a person with memory loss to socialize and enjoy activities with family members and friends in an informal setting.



Caregiver Support Group:

4th Tuesday each month Begins September 24th 10:00am-11:30am Family care partners come together to share information, experiences, and support. Groups are facilitated by skilled and knowledgeable volunteers. Free and open to the public.

For more information call Heather Moore, Dementia Outreach Specialist Alzheimer's & Dementia Alliance of Wisconsin 608.723.4288 or PdC Special Recreation Coordinator Jackie Frederich at 608-379-2353



YOUTH | ADULT | FAMILY | OUTDOOR RECREATION

PDC UKULELE CLUB



Meets at Hoffman Hall on Thursday evenings. **Beginning** Sept. 12-Nov. 21
Time: 6:30-8pm to jam and sing along to popular tunes from different eras. Share your favorite song nights will be scheduled depending on interest.
 Never played before? Come at 6:30 and we'll teach you some things to help you get started. No ukulele? We have a few that you can use for the night. Geared toward ages 12 and up, children under 11 accompanied by an adult. We have opportunities to perform for the public if interested! **FEE:** \$2.00/session

GROUP FISHING INSTRUCTION

This hands-on 1-1/2 hour class will provide participants the opportunity to learn a variety of basic techniques to get them started and help them enjoy this lifetime activity. All poles and bait provided. We can provide for large or small groups of any age, ability level. We will even take you ice fishing! **SITE:** Washington St. Park Shelter
FEE: \$2 per person - Call 326-7207



YOUTH FALL FISHING DERBY



Co-sponsored by Starks and Prairie Rod & Gun Club.
DATE/TIME:
 Sunday, September 15th - 4-5:30pm
SITE: Washington St. Park
FEE: \$2
PRE-REGISTER: On-Site

I CAN!

"Intergenerational Community Activity Network"

Join us this fall for this program which is encouraged for all ages. Participants will be able to enjoy their afternoons with a variety of activities including bingo, fitness, games, and field trips to name a few. A complete calendar with specific fun will be available at Hoffman Hall. For more info Call Sp. Recreation Coordinator Jackie Friedrich at 379-2353

BEGINS: Sept. 17th each Tuesday
 1-2:30pm

COST: \$2/session or Hoffman Hall membership



ROTARY DISC GOLF COURSE

As a result of the generosity of the Rotary Club of Prairie du Chien, an 18 hole disc golf course is now available on St. Feriole Island. There is no cost to utilize the course and you can rent discs for \$2 from City Hall. Take advantage of this great activity that is fun for the entire family!

Join us at the Oktoberfest Tournament on October 19th,
 8am on St. Feriole Island.

For more information call:
326-7207



GARDEN TALKS AT HOFFMAN HALL

These great Gardens programs are held on the second Tuesday of each month at Hoffman Hall from 1-2:30pm and are free and open to the public. Sessions are taught by Crawford County Master Gardener Volunteers. No pre-registration required. For more information contact Donna Teynor at 608-412-4661.

September 10: Bringing your indoor plants back inside for the winter. Lets make sure they are bug free and healthy.

October 8: Storing Canna, Dahlia, Gladiolus and Elephant Ears bulbs for the winter. Learn tips to keep them healthy all winter.

November 12: Indoor Plant Care: Basic plant care tips for your indoor plants. Let me know your plant questions before coming to class, I will bring instructions with me.

December 10: Cari ur Holiday Plants: How to keep your Poinsettia, Amaryllis and Christmas Cactus looking their best.

January 14: Seed Bombs for the new Year. Lets make milk weed seed bombs to plant for the Monarch Butterflies. Learn about Monarchs and how to help them thrive. I will bring seeds from different kinds of milkweed to put in our seed bombs.

February 11: Propagating indoor plants, learn how to start new plants from cuttings. You will take home new plant starts.

March 10: Seed Tapes and Seed Mats. Learn how to make your own seed tapes and seed mats to plant outside in spring.

April 14: Vegetables in Containers. No room for a garden learn how to easily grow your vegetables in containers on your deck, patio or the side of your driveway.



MASTER GARDENING

Crawford Co, Master Gardener Volunteers TEACH, LEARN, LEAD and SERVE in Prairie du Chien and many communities in Crawford County. We assist in maintaining public gardens in Prairie du Chien such as the Memorial Gardens, Veteran's Memorial, riverfront gardens, pocket gardens, and Fort Fun; as well as the county fairgrounds, libraries, and public garden areas in several communities. We participate in events such as plant sales, parades and Oktoberfest. We promote horticulture education with our Kids in the Garden and Lawn Chair Learning programs. For more information contact Crawford County UW-Extension office at 608-326-0223 or 412-4661.



ALZHEIMER'S WALK 2019 1 MILE WALK & 5K RUN

DATE: October 5th

SITE: St. Feriole Island

TIME: 9:00am

Registration, Silent Auction, Team Photos & Food: 8:00am

Awards Ceremony: 10:00am

All funds stay in Crawford County!

For more information call:
608-723-4288 or 888-308-6251



FAMILY FUN

KAYAK CLASSES

Geared for recreational users 12 and older. These two hour clinics will teach essentials for boat fitting, maneuvers, paddling skills and techniques. Ideal for new paddlers. No roll experience needed and no roll instruction provided. Must be a competent swimmer. All equipment provided!

DATE: March 21st, March 28th & April 4th

TIME: All sessions run on Saturdays 3pm-5pm

SITE: Hoffman Hall Pool

FEE: \$10/session



REC ROOM

(RECREATION, ENTERTAINMENT & CELEBRATION ROOM)



This family friendly new addition at Hoffman Hall can be utilized for a variety of activities and events such as birthday parties, showers, graduations, and reunions. The REC Room will have multiple games including Table Tennis, Foosball, Air hockey, Pool Table, and Dart Board to name a few.

We can accommodate groups up to 50 people (seated) with tables and chairs.

Rec Room Rental Fees are \$20/hr. If you have a Hoffman Hall Yearly membership your fees will be \$10/hr.

For an additional \$2/child (Adults free) the gym or pool may also be used if the hours are available. In some cases separate fees are applicable.

Call 326-2985 for more information.

HARMONY PARK

This accessible addition to St Feriolo Island Gardens was the result of a generous donation by the Brian Dillman Family. Checkout the cool instruments and perform your own concert!



PEOPLES STATE BANK

Prairie du Chien Locations

Downtown
301 E. Blackhawk Ave
(608) 326-3500

Riverside
1500 E. LaPointe St.
(608) 326-0507

Member FDIC
www.peoplesfinancial.com

ICE SKATE & SNOWSHOE/POLE RENTALS

Skates snowshoes/poles are available for rental at Hoffman Hall for weeknight and weekends.

CALL: 608-326-2985

RENTAL PRICES:

Skates \$2 (a day rental)
Snowshoes & poles \$5 (a day rental) (to be returned before 5 pm the next day)
Skates \$5 (weekend rental)
Snowshoes & Poles \$10 (weekend rental)

(To be picked up Friday before 5 pm and return Monday before 5 pm)



SOME PRETTY SPECIAL EVENTS



Oktoberfest 2019

"willkommen"

St. Feriole Island Gardens, Prairie du Chien, WI

Saturday, October 19

11:00 am - 5:00 pm

UNDER THE BIG TENT!
Large Food Tent with Wisconsin Badger Game

- PARADE 10 am • GERMAN FOOD
- LIVE MUSIC All Day Including the "Jim Busta Band" and Oktoberfest Singers
- OKTOBERFEST BEERS
- PDC UKULELE CLUB
- KIDS INFLATABLES AND ACTIVITIES
- FISCH RACES • BINGO (at Hoffman Hall)
- EUCHRE TOURNAMENT (Friday at Eagle's Club)
- HAMMERSCHLAGEN-STEIN HOLDING
- DISC GOLF TOURNAMENT • PIE AUCTION
- POTOSI BREWERY ROLLING BAR
- LEDERHOSEN 5K RUN/WALK
- STROLLING BUTTON BOX




Tourist Info www.prairieduchien.org 1-800-732-1673

All proceeds go to the St. Feriole Island Gardens!
- \$2.00 Button Admission Fee -

For more info call 608-326-7207 or email: mulrich@prairieduchien-wi.gov

2019/2020 CARPFEST

Co-Sponsored by PDC Park & Rec Dept. & Dropping of the Carp Committee.

WHEN: Dec 27th-Jan 1st

TENTATIVE LIST OF EVENTS:

- Dropping of the Carp (Dec 31)
- Arts & Crafts • Bowling
- Pool Activities • Daily Youth Games
- Carp Coloring Contest
- Rotary Brunch

For More Info call 326-7207



QUILT THE DAYS AWAY



Get together with friends to "fine tune" your quilting techniques, socialize, eat yummy food and just have some fun at the areas largest quilting retreat!

SITE: Hoffman Hall

WHEN: April 3rd & 4th

FOR MORE INFORMATION

CALL:

608-326-2526

SPRING FLING INDOOR CRAFT AND FLEA MARKET 2020

The Indoor Craft and Flea Market is a Fund Raiser for Hoffman Hall and hosted by the Prairie du Chien Park and Recreation Department on **Saturday, April 25, 2020 from 9 am – 2 pm.**

This is an excellent opportunity for vendors to sell your items to hundreds of people who attend this event each year. The cost for a 10' x 10' booth is \$30.00.

You must provide your own tables or displays. We will provide chairs. **Set up will be available on Friday, April 24 from 2pm-6pm or Saturday morning from 7am-8:30am.**

For more info call 326-2985 or register online.



HALLS OF TERROR

The Scream Extreme is back once again but will you be brave enough to attend? Visit us at St. Feriole Terror Island..if you dare!

DATES/TIMES: Oct. 11, 12, 18, 19, 25, 26 7:00pm-10:30pm. Oct. 27th – 1-3pm Kid Friendly Haunt. Kids Costume Contest 12 Noon.

ADMISSION: \$8 (Kid Friendly: \$2) www.hallsofterrorpdc.com for more information.



HOLIDAY GIFT & CRAFT FAIR

Holiday sites, smells and sounds will transform Hoffman Hall into the place to be for getting that special person (which may be yourself) that perfect gift. Music and entertainment throughout the day.

SITE: Hoffman Hall

WHEN: November 23rd

TIME: 9am-2pm

Interested vendors call 326-2985 or register online



ANNUAL TURKEY TROT



5K (3.1 MILE) FUN RUN & WALK!

Bring the whole family!

FEES: \$10 per family or \$5 per person.

Proceeds go to Hoffman Hall Improvement Fund. Bring canned food to donate to local pantry. **REGISTER ON SITE.**

SITE: Hoffman Hall **TIME:** 8am **WHEN:** Thanksgiving Morning, Nov. 28th

SHAMROCK SHUFFLE

Don your best green or Irish gear and join us for a Fun Run 5K or walk it with the entire family. Prizes awarded. All money will be donated to Hoffman Hall Improvement Fund. We invite you to bring a canned good to donate to the food pantry.

SITE: Hoffman Hall

WHEN: March 14th

TIME: 8am

Register: At Hoffman Hall on Site or <http://www.raceentry.com/races/pdc-shamrock-shuffle/2020> register



REALLY COOL PARK STUFF!

TREE CITY USA

We are proud to be recognized as one of 3000 communities in the country to hold this status. Thanks to efforts from city staff, and many donors and volunteers we continue to be able to offer a healthy sustainable urban forestry program. We are committed to keep our community environmentally healthy through education, innovative programs, and increased emphasis on planting and caring.



THE TRAIL OF PRESIDENTS

Very few small towns can say they have had 22 presidents that lived or visited their communities. We have researched each United States President and have formed a list of the 22 presidents that have visited Prairie du Chien. The Oak tree is America's National Tree. Oak trees are being planted because individual oaks have played a part in historical events. In the annals of military history "Old Ironsides," the U.S. Constitution, took

its nickname from the strength of its live oak hull, famous for repelling British cannonballs. President of Mexico, Vicente Fox was educated at Campion Boys School here. Come visit this one-of-a-kind park to find out more!



MEMORIAL TREE PROGRAM

The Parks & Recreation Department works with the St. Feriole Island Gardens to provide many wonderful trees throughout the Island. If you are interested in providing a tree in recognition of a person, location, or event please call Tom Nelson at 326-8602.



Because of many generous donations we would like to thank everyone for their support in providing trees for all to enjoy for many years to come!

FOLLIES 2020

Community Talent Show to support the Mississippi River Sculpture Park. New acts and new talent are always welcome! Performance at High School Theatre. Dates and times to be announced



PDC SKATEBOARD PARK

The Children's Advisory Board along with many supporters have added a great skateboard park to the Prairie du Chien Park system. There is no admission charge to the new park and it is open to skateboards, rollerblades and BMX style bikes during park hours. It is located in the Aquatic Park/ Fort Fun complex.

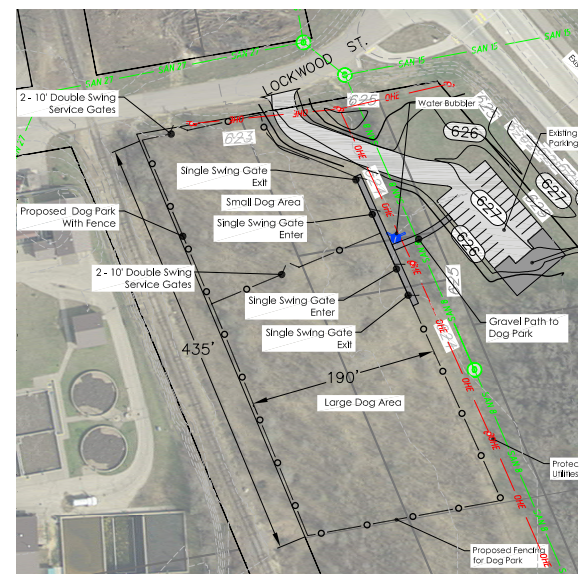


PDC FUTURE DOG PARK

On April 26, 2018 the City of Prairie du Chien purchased approximately 5 acres of land from the Dept. of Transportation off Lockwood Street near the Campion Boat Landing. This area was designated as an area for the development of a 1.9 acre fenced-in Dog Park. Veirbecher Engineering developed a conceptual plan that provided the PdC Dog Park committee members (Bob Witt, Dawn McCoy, Randy Paske, and Parks & Rec. Director Mike Ulrich) a plan for the future.

With multiple meetings that followed the committee was able to provide the following: a mission statement, a site specific plan, a financial breakdown of park needs, and lastly rules/regulations that have

been approved by the Police/City attorney. The committee takes great pride in being able to share their vision of the wonderful new park for the community. For more information on how you can help please call the Parks & Recreation department at 608-326-7207.



For Information Call: 608-326-7207

THE PARKS OF PRAIRIE DU CHIEN & EVENTS

ST. FERIOLE ISLAND

Our busiest park! This park is the site of the earliest settlement and activity in Prairie du Chien.

- Site of the Battle of Prairie du Chien during the War of 1812 and of the First Fort Crawford, where three important Indian treaties were signed.

- Fourth Ward residential neighborhood, until it was relocated following the record flood of 1965.
 - Home of the Villa Louis, the Dousman family estate built on the site Fort Crawford.
 - Contains Lawler Park, the river-front, Mississippi River Sculpture Park, St. Feriole Island Garden & St. Feriole Island Ball Park and President Trees.
 - Host to annual events including



the Prairie Villa Rendezvous, Prairie Dog Blues Fest, and Villa Louis Carriage Classic, Mud Run, Oktoberfest and so much more!

- Ideal for walking, biking & fishing.
- Good location for watching ducks and eagles in season.
- Boat landings & picnic areas.
- Two approaches to the island at Blackhawk Ave. & Washington St.
- 18 hole disc golf course.

Enjoy what the Island has to offer!

MISSISSIPPI RIVER SCULPTURE PARK

Located on historical St. Feriole Island along the Mississippi River and adjacent to the Villa Louis.

This park includes life size bronze statues of Chief Blackhawk, Voyager Julian Coryer, and Emma Big Bear to name a few. Walking tours are available. Check out the new augmented reality where each sculpture comes alive and tells a story.

Look in the little Library to find a small card for directions.

For more information call: 326- 2721 or go to: www.mississippiriversculpturepark.com



ST. FERIOLE ISLAND GARDENS

Prairie du Chien's most picturesque and serene garden area emphasizes the natural beauty within the Memorial Gardens. The gardens consist of ten acres of various perennial and annual flowers that adorn the pocket parks, multiple walking paths, memorials and over 50 species of historical trees. Also included are the Children's Activity Gardens, the Shade Gardens, and the Patio Garden.



The area hosts numerous events including weddings and receptions, garden parties, plant sales, annual first grade Arbor Day ceremony, and Oktoberfest. Free self-guided tours. Group tours offered for a nominal fee.

Located at 200 N. 4th St. on St. Feriole Island.
For more information, call 608-326-8602.

LA RIVIERE PARK



A 300 acre city park managed for its natural beauty and wildlife. The park is a mix of hardwood forest, grasslands, and native prairie. Provides six miles of hiking trails, nature viewing, bird watching, cross-country skiing, archery area, picnic area, and shelter house. Horse trails in the park and adjoining trails cover over 50 miles. There are 3 free primitive walk-in only campsites available, for more info call 326-7207.

For horse trail conditions and horse camping info call 608-734-3692. Located at 662036 Vineyard Coulee Rd., SE, of PdC.

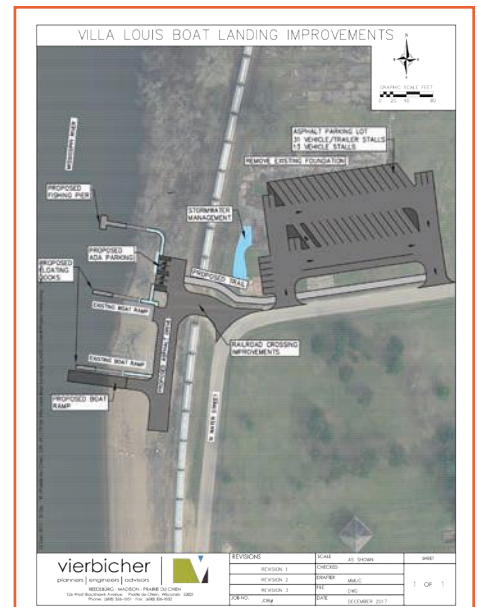
LA RIVIERE PARK SHELTER



Members of the Prairie du Chien Park Board and the La Riviere Park Board pose in front of La Riviere Park's brand new shelter Aug. 21. The project, completed by Top Notch Construction, features electrical power, lights, handicap-accessible bathrooms, water and a utility room. The shelter is currently available first come, first serve but is available for rentals for the 2020 season. \$50.00 Res. / \$60.00 Non Res. Call 326-6464.

VILLA LOUIS BOAT LANDING IMPROVEMENTS

Because of the support from the Department of Natural Resources, Recreational Boating grants and the city boat launch fees (and hard work from City Planner Garth Frable) you will see an improved Boat Landing slated to be upgraded in 2019 .This includes a paved parking lot, an additional new launch with docks, and an accessible fishing dock right on the main channel!



HOFFMAN HALL DONORS



Because of the support of various businesses, organizations, and individuals, we have been able to raise over \$1.8 Million to date for the improvements to Hoffman Hall Recreation Center. Because of this incredible support, we look forward to offering more quality activities and special event programming in the future.

If you would like to get more information of how to assist with Hoffman Halls' upgrades, please call Parks & Recreation Director Mike Ulrich at 608-326-7207.



HOFFMAN HALL DONOR RECOGNITION WALL

LEADERS

Katie & Mark Forsythe
 Prairie du Chien Memorial Hospital
 Jim Greenwald Family

The Dillman Family & Employees
 State of Wisconsin
 Cabelas
 3M Prairie du Chien
 Peoples State Bank

Prairie Industries
 Tom & Jean Farrell
 Tom & Sally White
 Iverson Construction a Division of Mathy
 Bruce Welsch

PARTNERS

Virginia Eichmann
 Town & Country Sanitation, Inc
 BNSF Railway Foundation
 Madison Gas & Electric
 Gunderson Lutheran
 Woodward Foundation
 Ryan M. Rippentrop &
 Gayette Grimm
 Burmester Charitable Trust
 Vierbecher Associates
 Nelson True Value
 Super 8 Motel/Windsor
 Motel & Brian Park

Prairie du Chien Tourism Council
 Wisconsin & Southern Railroad
 Dr. Michael & Mary Ann Garrity
 The Grangier Foundation
 Gary & Kathy Koch
 Bill & Coreen Adamany
 Childrens Advisory Board
 Dependable Solutions
 Steve Miller

Scream Xtreme - Shawn Redman,
 Nick Gilberts, Nate Gilberts
 Hardees
 Wolf Machine
 Ross & Pam Ritchie
 Kramer Auction
 Mayo Clinic Health Systems
 Stage Stores-Peebles
 Hans & Judy Gill
 Gary & Joan Howe
 Janet & Ted Finn
 Eric & Diana Temte
 Forest & Kay Walters
 Jeri & Jack Kluesner
 Mary & Nick Campbell

Mark & Megan Pedretti
 Mike & Karen Ulrich
 Garth Frable & Teresa McMahon
 SportsWorld
 Carpets to Go -
 Prairie du Chien/Onalaska
 Clinicare
 Crawford County Community Fund
 Class of 1986
 Gale & Cheryl Beneker
 Jim & Pat Coorough
 MPC Inc.
 Jim & Alice Ulrich
 Family & Friends

FRIENDS

Prairie du Chien Jaycees
 Buckets of Hope/Sue Mara
 Tom & Cathie Nelson
 Prairie du Chien Foundation, Inc

Res. Fee: _____ Non-Res. Fee: _____

Participant: _____ Male _____ Female _____ Age _____

Address: _____ City: _____ Zip _____

Phone #: _____ School Attending: _____

Parent's Name: _____ T-shirt Size (If applicable) YS, YM, YL, AS, AM, AL, AXL (circle one)

Name of program: _____ Practice Site: _____ Level & Time: _____

Signature of parent/guardian: I hereby understand that my son/daughter has registered to participate in the above state programs, like most programs similar in nature, has some degree of inherent risk involved. Furthermore, my son/daughter is in good physical condition appropriate for the stated activities, and that participants must assume full responsibility for personal injury incurred while taking part in the activities. No accident insurance is provided through the city of Prairie du Chien. Prairie du Chien Park and Recreation has permission (but before and anytime after) to use the participants likeness, name, voice, or works with television, radio, film newspaper, magazines, and other media, and in any form, for the purpose of advertising or communicating the purpose and activities of Prairie du Chien Park and Recreation and/or applying for funds to support these purposes and activities. Please list any special considerations we should know of (medicines, disabilities, etc.)

Please check the box if you are interested in instructing part-time or volunteering.

Parent/Guardian Signature: _____ Date: _____

Please inform us of any allergic reactions or health issues we should be aware of: _____

For Information Call: 608-326-7207 • To Register Go To: pdc.recdesk.com/community/program

Kids Savings Account

A great way to help your kids save!



**Receive a piggy bank when you open a Peoples State Bank Savings Account for your child.*

Visit your nearest PSB branch to apply.

- ✓ No minimum daily balance
- ✓ No monthly maintenance fees
- ✓ No minimum opening deposit



*While supplies last. One per child. Must open a savings account to receive piggy bank. Piggy bank will be received at time of account opening. Minor must be accompanied by an adult at time of account opening.

Member
FDIC

www.peoplesfinancial.com

608-326-3500